

Single Cleats

DESCRIPTION

Single cleats allow a single cable to be kept horizontal or vertical.

There are two systems of single cleats:

⇒ Single cleats intended for fastening MV cables of diameters from 28 mm to 39 mm.

⇒ Hinged single cleats intended for fastening cables of diameters from 42 mm to 142 mm.

MATERIAL

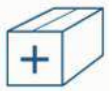
Aluminium alloy AS13 + stainless steel

INFORMATION



Provided with the cleat:

Single cleat: screws for closing and fastening
Hinged cleat: screws for closing



To be ordered separately:

Wrenches: make closing easier, see page 27
Protection for single cleat, see page 20
Fastening screws for single hinged cleat, see page 32
Assembly paste for screws, page 32

STANDARD



Single hinged cleats:

RTE-approved according to size and application,
IEC-certified, see pages 35 and 36

CS**V



Single screw version cleat

CS**E



Single nut version cleat



Single screw version hinged cleat



Single nut version hinged cleat



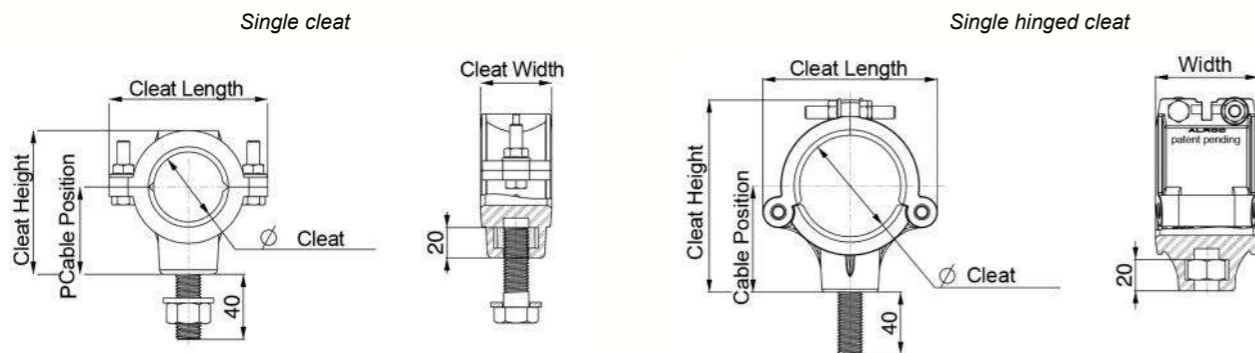
M12

M16



ALSO AVAILABLE:

Threading: For use with medium voltage cables, we can supply you with single hinged cleats of Ø44 to Ø90 with M12 fastenings



To make your installation diagrams easier, we can provide you with our simplified 3D files on request

	≤ Ø < Cable in mm	Cleat in mm	Length in mm	Width in mm	Height in mm	Cable position in mm	Protection thickness	Protection reference	Cleat reference	
									M16 screw	M16 nut
Single cleat	28 to 32	44	100	45	91	55	10	PC 10-44	CS 44 V	CS 44 E
	32 to 35	44	100	45	91	55	8	PC 8-44	CS 44 V	CS 44 E
	35 to 37	47,5	100	45	91	55	10	PC 10-47,5	CS 47,5 V	CS 47,5 E
	37 to 39	47,5	100	45	91	55	8	PC 8-47,5	CS 47,5 V	CS 47,5 E
Single hinged cleat	42 to 44	60	112	66	121	68	10	PCA 10-60	CSC 60 V	CSC 60 E
	44 to 47	60	112	66	121	68	8	PCA 8-60	CSC 60 V	CSC 60 E
	47 to 49	65	112	66	121	68	10	PCA 10-65	CSC 65 V	CSC 65 E
	49 to 52	65	112	66	121	68	8	PCA 8-65	CSC 65 V	CSC 65 E
	52 to 54	70	121	66	125	70	10	PCA 10-70	CSC 70 V	CSC 70 E
	54 to 57	70	121	66	125	70	8	PCA 8-70	CSC 70 V	CSC 70 E
	57 to 59	75	126	66	131	71	10	PCA 10-75	CSC 75 V	CSC 75 E
	59 to 62	75	126	66	131	71	8	PCA 8-75	CSC 75 V	CSC 75 E
	62 to 64	80	134	80	138	74	10	PCA 10-80	CSC 80 V	CSC 80 E
	64 to 67	80	134	80	138	74	8	PCA 8-80	CSC 80 V	CSC 80 E
	67 to 69	85	140	80	144	77	10	PCA 10-85	CSC 85 V	CSC 85 E
	69 to 72	85	140	80	144	77	8	PCA 8-85	CSC 85 V	CSC 85 E
	72 to 74	90	145	80	150	80	10	PCA 10-90	CSC 90 V	CSC 90 E
	74 to 77	90	145	80	150	80	8	PCA 8-90	CSC 90 V	CSC 90 E
	77 to 79	95	151	80	158	82	10	PCA 10-95	CSC 95 V	CSC 95 E
	79 to 82	95	151	80	158	82	8	PCA 8-95	CSC 95 V	CSC 95 E
	82 to 84	100	157	100	163	86	10	PCA 10-100	CSC 100 V	CSC 100 E
	84 to 87	100	157	100	163	86	8	PCA 8-100	CSC 100 V	CSC 100 E
	87 to 89	105	163	100	168	88	10	PCA 10-105	CSC 105 V	CSC 105 E
	89 to 92	105	163	100	168	88	8	PCA 8-105	CSC 105 V	CSC 105 E
	92 to 94	110	169	100	175	92	10	PCA 10-110	CSC 110 V	CSC 110 E
	94 to 97	110	169	100	175	92	8	PCA 8-110	CSC 110 V	CSC 110 E
	97 to 99	115	174	100	180	94.5	10	PCA 10-115	CSC 115 V	CSC 115 E
	99 to 102	115	174	100	180	94.5	8	PCA 8-115	CSC 115 V	CSC 115 E
	102 to 104	120	180	100	186	96	10	PCA 10-120	CSC 120 V	CSC 120 E
	104 to 107	120	180	100	186	96	8	PCA 8-120	CSC 120 V	CSC 120 E
	107 to 109	125	186	100	191	99	10	PCA 10-125	CSC 125 V	CSC 125 E
	109 to 112	125	186	100	191	99	8	PCA 8-125	CSC 125 V	CSC 125 E
	112 to 114	130	192	100	194	101,5	10	PCA 10-130	CSC 130 V	CSC 130 E
	114 to 117	130	192	100	194	101,5	8	PCA 8-130	CSC 130 V	CSC 130 E
	117 to 119	135	198	100	205	106	10	PCA 10-135	CSC 135 V	CSC 135 E
	119 to 122	135	198	100	205	106	8	PCA 8-135	CSC 135 V	CSC 135 E
122 to 124	140	201	100	205	107	10	PCA 10-140	CSC 140 V	CSC 140 E	
124 to 127	140	201	100	205	107	8	PCA 8-140	CSC 140 V	CSC 140 E	
137 to 139	155	215	100	220	114	10	PCA 10-155	CSC 155 V	CSC 155 E	
139 to 142	155	215	100	220	114	8	PCA 8-155	CSC 155 V	CSC 155 E	

We can make bespoke cleats, please contact us for other sizes

Double Cleats

DESCRIPTION

M16 double cleats are intended for horizontal and vertical fastening of two cables.

There are two systems of double cleats:

⇒ Double cleats intended for fastening MV cables of diameters from 28 mm to 39 mm.

⇒ Double hinged cleats intended for fastening 630² cables of diameter 46 mm to 57 mm. They are reinforced by external ribs, central on the three main parts of the cleat.

MATERIAL

Aluminium alloy AS13 + stainless steel

INFORMATION

Provided with the cleat:
 Double cleat: protection + screws for closing and fastening
 Hinged double cleat: screws for closing

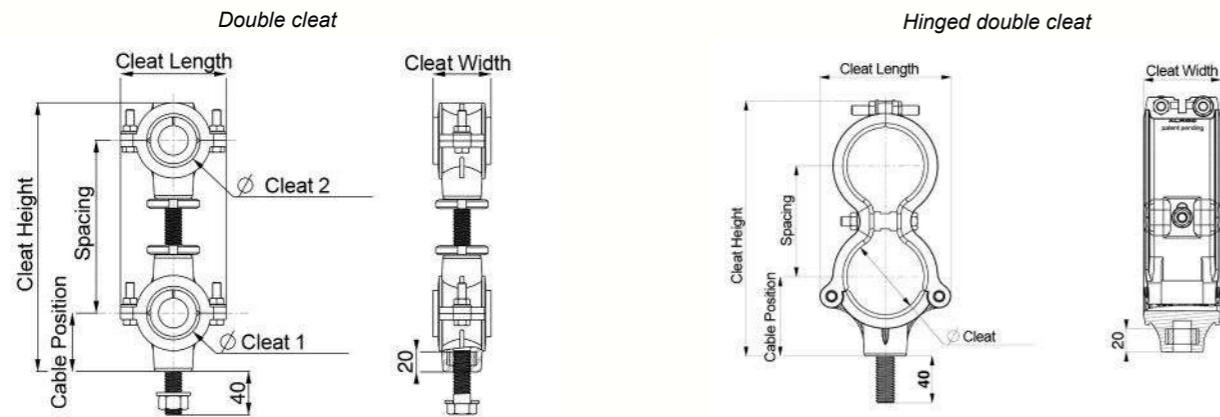
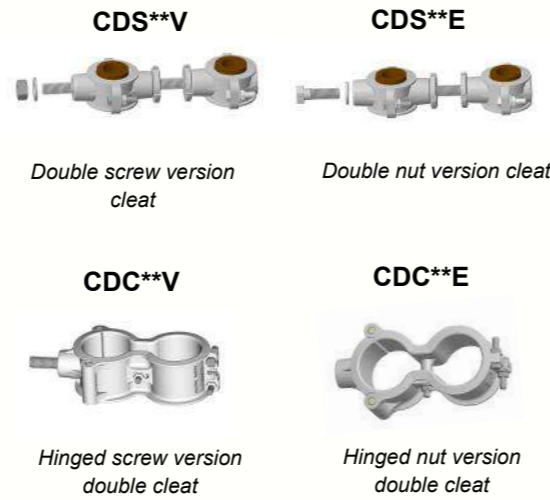
To be ordered separately:
 Wrenches: make closing easier, see page 27
 Protection for triple cleat, see page 20
 Fastening screws for hinged triple cleat, see page 32
 Assembly paste for screws, page 32

STANDARD

IEC Hinged double cleats: IEC certified, see pages 35 and 36

ALSO AVAILABLE:

Threading: We can provide Ø60 or Ø66 cleat with M12 screw or nut



To make your installation diagrams easier, we can provide you with our simplified 3D files on request

Type	≤ Ø < Cable in mm	Ø Cleat in mm	Length in mm	Width in mm	Height in mm	Cable position in mm	Pitch in mm	Protection thickness	Protection reference	Cleat reference	
										M16 screw	M16 nut
Double cleat	28 to 32	44	100	55	255	55	165 (possible to change the pitch)	10	PC 10-44 (supplied)	CDS 44 V-F10	CDS 44 E-F10
	32 to 35	44	100	55	255	55	165 (possible to change the pitch)	8	PC 8-44 (supplied)	CDS 44 V-F8	CDS 44 E-F8
	35 to 37	47.5	100	55	255	55	165 (possible to change the pitch)	10	PC 10-47.5 (supplied)	CDS 47.5 V-F10	CDS 44 E-F10
	37 to 39	47.5	100	55	255	55	165 (possible to change the pitch)	8	PC 8-47.5 (supplied)	CDS 47.5 V-F8	CDS 47.5 E-F8
Hinged double cleat	46 to 49	60	112	66	217	68	95	10	PCD 10-60	CDC 60 V	CDC 60 E
	49 to 52	60	112	66	217	68	95	8	PCD 8-60	CDC 60 V	CDC 60 E
	52 to 55	66	112	66	215,5	68	95	10	PCD 10-66	CDC 66 V	CDC 66 E
	55 to 57	66	112	66	215,5	68	95	8	PCD 8-66	CDC 66 V	CDC 66 E

Bespoke double cleats

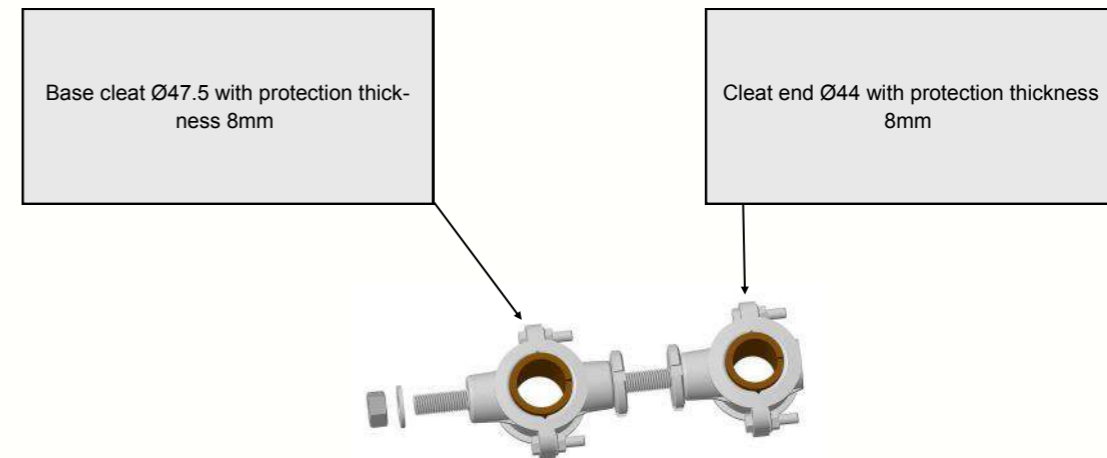
DESCRIPTION

For hinged double cleats, it is possible to choose M12 screw or nut threading.

You can configure double cleats without hinges by changing the size of the cleats or the thickness of the protections.

EXAMPLE

Cleat reference: CDS 47.5-44V-F8



Triple Cleats

DESCRIPTION

Triple cleats allow three cables to be held horizontally or vertically at once. They are used for installations where cables are provided in trefoil arrangement and where each phase is independent.

There are two systems of triple cleats

⇒ Triple cleats without hinges are installed by tightening the 3 cables at the same time. They can be provided in M16 nut or M16 screw version.

⇒ Hinged triple cleats are installed by tightening the cables by phase, which makes it easier to operate and dispenses with the need to install cables temporarily.

MATERIAL

Triple cleat: Aluminium alloy AS13 + stainless steel

Hinged triple cleat: Aluminium alloy AS13 and AS7G06 + stainless steel

INFORMATION



Provided with the cleat:

Triple cleat, hinged or unhinged: screws for closing



To be ordered separately:

Wrenches: make closing easier, see page 27

Protection for triple cleat, see page 20

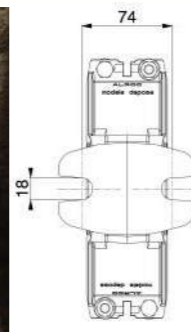
Fastening screws for hinged triple cleat, see page 32

Assembly paste for screws, page 32

STANDARD



Hinged triples cleats: IEC certified, see pages 35 and 36



CST**E



Triple nut version cleat without hinge

CST**V



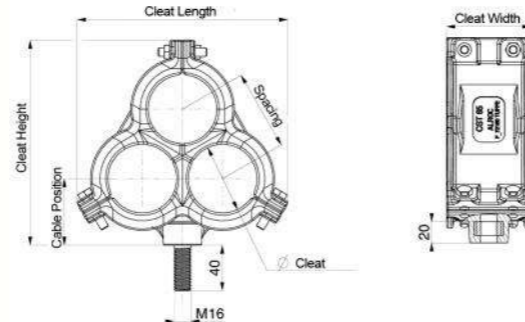
Triple screw version cleat without hinge



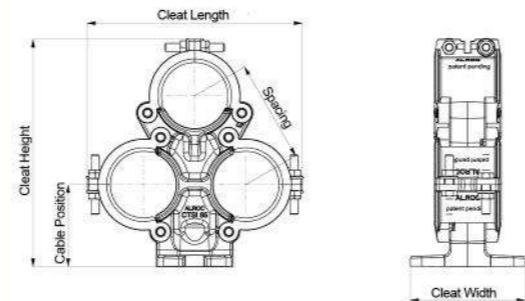
CTSI

Hinged triple cleat

Triple cleat without hinge



Hinged triple cleat



To make your installation diagrams easier, we can provide you with our simplified 3D files on request

Triple cleat without hinge

≤ Ø < Cable in mm	Ø Cleat in mm	Length in mm	Width in mm	Height in mm	Cable position in mm	Pitch in mm	Protection thickness	Protection reference	Cleat reference	
									M16 screw	M16 nut
42 to 44	60	198	80	194,5	63	66	10	PCT 10-60	CST 60 V	CST 60 E
44 to 47	60	198	80	194,5	63	66	8	PCT 8-60	CST 60 V	CST 60 E
47 to 49	65	198	80	194,5	63	66	10	PCT 10-65	CST 65 V	CST 65 E
49 to 52	65	198	80	194,5	63	66	8	PCT 8-65	CST 65 V	CST 65 E
52 to 54	70	198	80	194,5	63	66	10	PCT 10-70	CST 70 V	CST 70 E
54 to 57	70	198	80	194,5	63	66	8	PCT 8-70	CST 70 V	CST 70 E
57 to 59	75	235	80	231	72	96	10	PCT 10-75	CST 75 V	CST 75 E
59 to 62	75	235	80	231	72	96	8	PCT 8-75	CST 75 V	CST 75 E
62 to 64	80	235	80	231	72	96	10	PCT 10-80	CST 80 V	CST 80 E
64 to 67	80	235	80	231	72	96	8	PCT 8-80	CST 80 V	CST 80 E
67 to 69	85	235	80	231	72	96	10	PCT 10-85	CST 85 V	CST 85 E
69 to 72	85	235	80	231	72	96	8	PCT 8-85	CST 85 V	CST 85 E

Hinged triple cleat

≤ Ø < Cable in mm	Ø Cleat in mm	Length in mm	Width in mm	Height in mm	Cable position in mm	Pitch in mm	Protection thickness	Protection reference	Cleat reference
47 to 49	65	212	112	223	80	100	10	PCA 10-65	CTSI 65
49 to 52	65	212	112	223	80	100	8	PCA 8-65	CTSI 65
67 to 69	85	258	128	275	100	125	10	PCA 10-85	CTSI 85
69 to 72	85	258	128	275	100	125	8	PCA 8-85	CTSI 85
82 to 84	100	302	140	309	105	145	10	PCA 10-100	CTSI 100
84 to 87	100	302	140	309	105	145	8	PCA 8-100	CTSI 100
92 to 94	110	310	140	336	110	160	10	PCA 10-110	CTSI 110
94 to 97	110	310	140	336	110	160	8	PCA 8-110	CTSI 110

We can make bespoke cleats, please contact us for other sizes